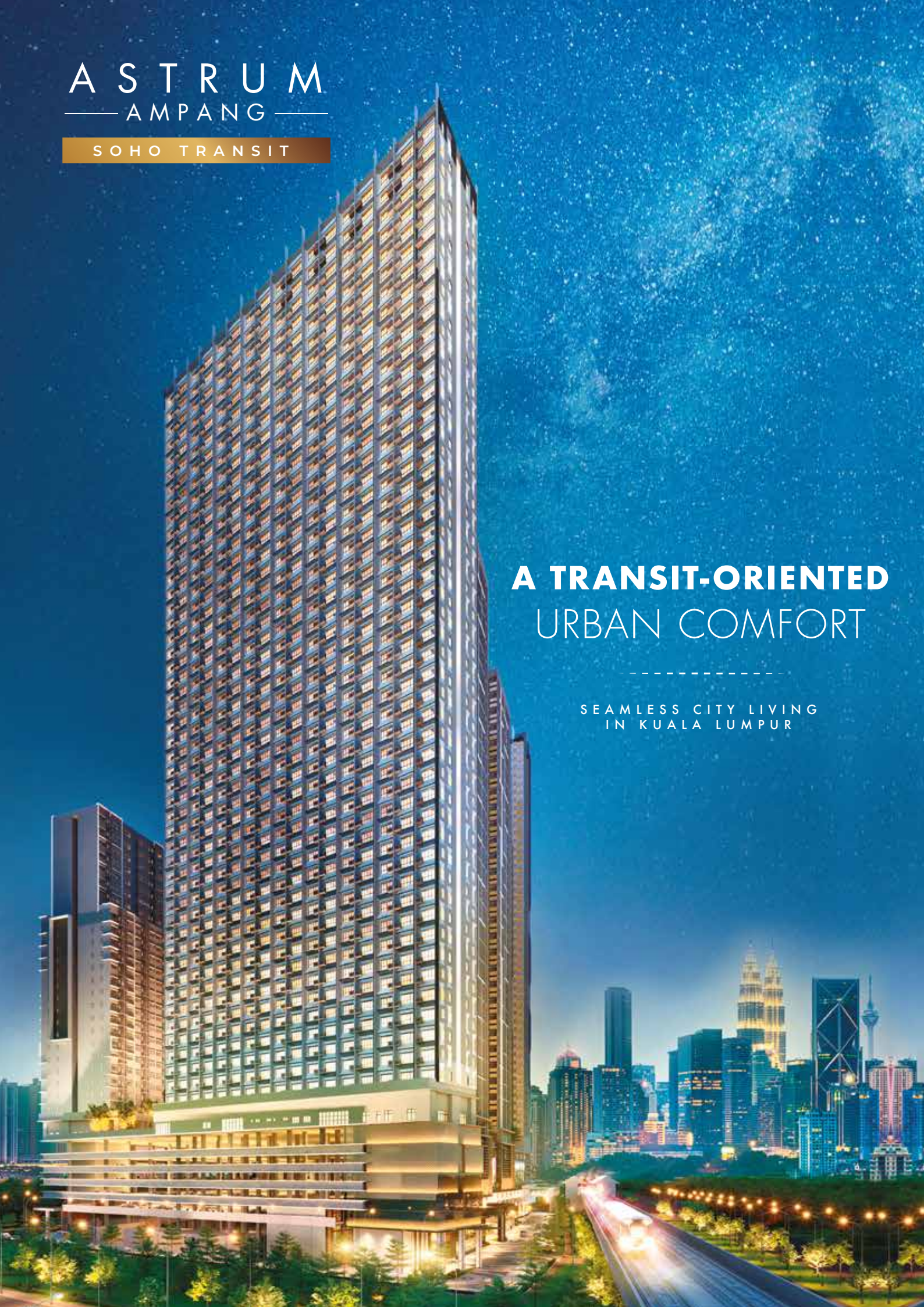


ASTRUM
— AMPANG —

SOHO TRANSIT

**A TRANSIT-ORIENTED
URBAN COMFORT**

SEAMLESS CITY LIVING
IN KUALA LUMPUR





Astrum Avenue

SMART LIVING AT RM230K* ONLY

*Terms and conditions apply.

With vigilant security systems, smart community app and wellness facilities, Astrum Ampang SOHO Transit connects residents with the city and with their active pursuits in a smarter way of living.



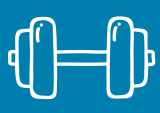
5G FACIAL RECOGNITION SECURITY



TRANSIT ORIENTED DEVELOPMENT



GATED COMMUNITY



SMART GYM WITH PERSONALISED VIRTUAL CLASS



5-ACRE LANDSCAPED PODIUM WITH 62 FACILITIES



24/7 SECURITY WITH CCTV SURVEILLANCE



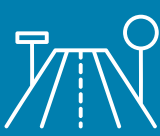
FREE WIFI AT COMMON AREAS



DIRECT FOOTBRIDGE TO JELATEK LRT STATION



LESS THAN 5KM FROM KL CITY CENTRE



ACCESSIBLE VIA SPE (DUKE 3), AKLEH, DUKE, JALAN AMPANG



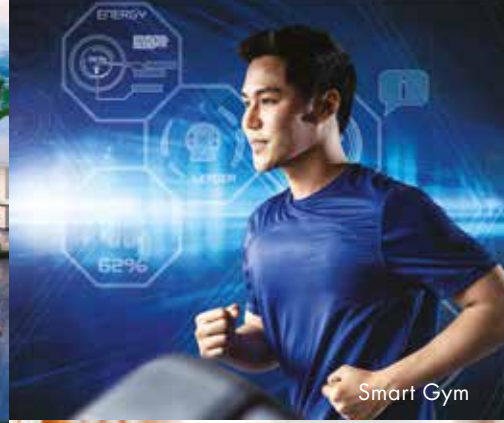
NEAR MALLS AND INTERNATIONAL SCHOOLS



PROXIMITY TO TOP-NOTCH HEALTHCARE CENTRES



Galaxy-inspired facilities podium landscape



Smart Gym



Complimentary WiFi at common areas

AMONGST THE 62 LEISURE AND WELLNESS FACILITIES



WORKROOM



MILKY WAY POOL



GAMING ROOM



FUTSAL COURT



VIRTUAL CYCLING



BBQ PAVILION



SIGNATURE LANTERN PAVILION



OUTDOOR THEATRE



GOURMET KITCHEN/ LOUNGE



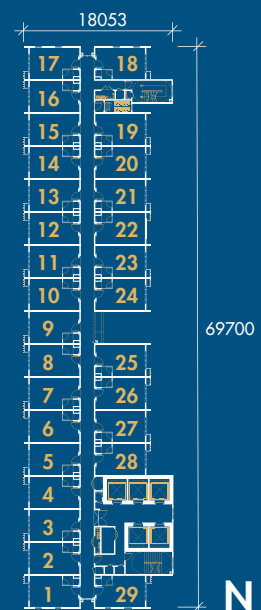
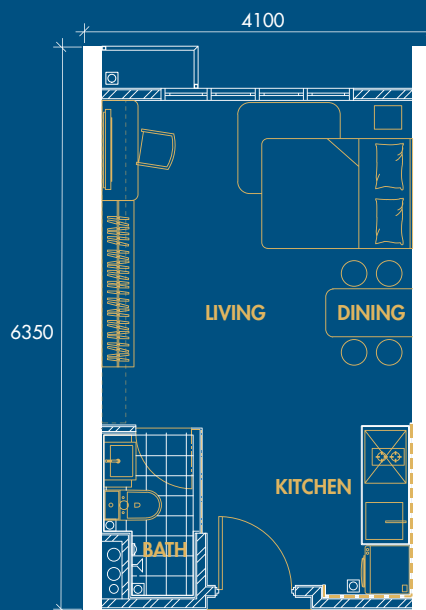
CO-WORKING SPACE

TYPICAL FLOOR PLAN

TYPE A

🏠 280 sq.ft.

1 🛏 + 1 🚿



STAY CONNECTED KL CITY CENTRE



	120m	Jelatek LRT Station		90m	Datum Shopping Mall
	3.5km	KLCC Park		2.9km	Great Eastern Mall
	4.2km	Petronas Twin Tower		4.3km	Suria KLCC
	5.7km	Tun Razak Exchange		4.8km	Pavilion Kuala Lumpur
				6.6km	Sungei Wang Plaza
				7.3km	Berjaya Times Square

KELANA JAYA LRT ROUTE



CALL FOR MORE INFO.

Setia Awan
Making Dreams Possible

ASTRUM AMPANG SDN. BHD. (864153-V)
Formerly Known As Greenstone Development Sdn. Bhd.
Units 109, 110 Block G Pusat Dagangan Phileo Damansara 1, No. 9, Jalan 16/11, Off Jalan Damansara 1 No.9 Jalan 16/11, Off Jalan Damansara 46350 Petaling Jaya, Malaysia



Astrum Ampang Gallery

018-371 2888
www.astrumampang.com

